

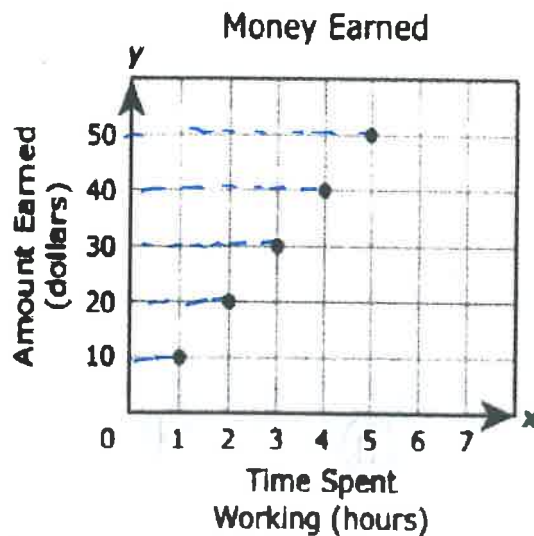
1)

$$Y = 5x \quad \leftarrow \text{Multiplicative Equation}$$

$$Y = x + 5 \quad \leftarrow \text{Additive Equation}$$

A) In $Y = 5x$ and $Y = x + 5$, the value of Y is 5 more than the value of x .B) In $Y = 5x$ the value is Y five times the value of x , and in $y = x + 5$ the value of Y is 5 more than the value of x .C) In $Y = 5x$ the value is 5 more than the value of x , and $Y = x + 5$ the value of Y is five times the value of x .D) In $Y = 5x$ and $Y = x + 5$, the value of Y is five times the value of x .

2)

 y axisWhich list shows the dependent quantities in the graph?

A) 101, 202, 303, 404, 505

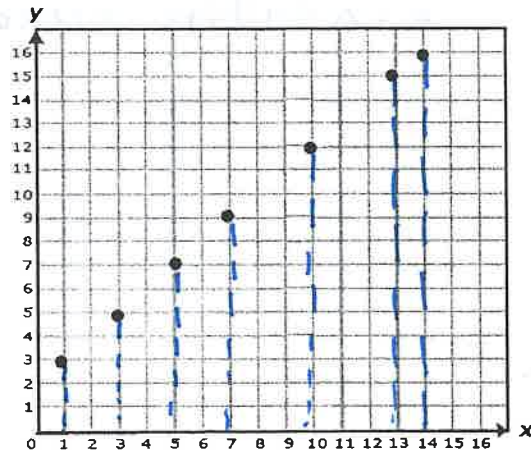
B) 10, 20, 30, 40, 50

C) 11, 22, 33, 44, 55

D) 1, 2, 3, 4, 5

D
x
I
n
d
e
p
e
n
d
e
n
tR
Y
D
e
p
e
n
d
e
n
t

3)



x-axis

Which list best represents the independent values of the graphed points?

- A) 3, 5, 7, 9, 12, 15, 16
- B) 10, 20, 30, 40, 50, 60, 70
- ☒ C) 1, 3, 5, 7, 10, 13, 14
- D) 30, 50, 70, 90, 120, 150, 160

D
X
I
I
D
e
p
e
n
d
e
n
t

4) The table below shows how much money Mrs. Broussard spends on her babysitter. Which equation best represents the relationship?

Number of Hours (h)	Amount Earned (d)
2	18.00
3.5	31.50
5	45.00
7	63.00
8.5	76.50

- A) $d = h + 9$
- B) $h = 9d$
- C) $h = d + 9$
- ☒ D) $d = 9h$

$$d = 9 \times h$$

$$d = 9h$$

← multiplicative Equation

5)

The number of dimes in a collection is 5 less than the number of quarters. Which table below shows possible numbers of dimes and quarters in the collection?

A)

Dimes and Quarters				
Number of Dimes	3	5	8	11
Number of Quarters	15	25	40	55

B)

Dimes and Quarters				
Number of Dimes	5	6	8	10
Number of Quarters	10	11	13	15

C)

Dimes and Quarters				
Number of Dimes	18	19	21	23
Number of Quarters	13	14	16	18

D)

Dimes and Quarters				
Number of Dimes	5	10	15	25
Number of Quarters	1	2	3	5

$$\text{dimes} = \text{Quarters} - 5$$

Additive Equation

6) The which situation can be represented by this equation $y = 6x$?

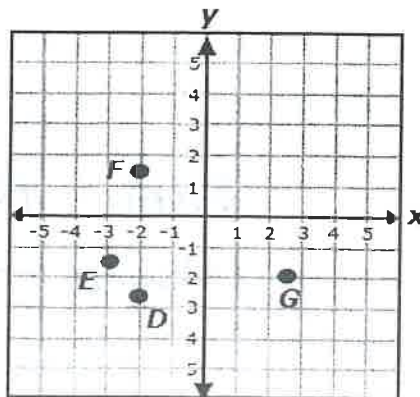
A) A class has y boys. The number of boys is 6 more than the number of girls.

B) One piece of string is y units long. It is 6 inches shorter than another piece of string.

C) Joanie read y pages of her history assignment. She read 6 times as many pages as Beth read, x .

D) Cindy had x pictures to place in a photo album. She will put 6 pictures on each page. How many pages, y will she need for her pictures.

7)



answer choices



Which ordered pair is not appear to be represented by one of these points?

A) $(-2, 1\frac{1}{2})$

☒ B) $(-2\frac{1}{2}, 2)$

C) $(2\frac{1}{2}, -2)$

D) $(-3, -1\frac{1}{2})$

8)

The number of sheets of paper in x packages is described by the rule $y = 50x$. Which verbal description describes this relationship?

← multiplicative Equation

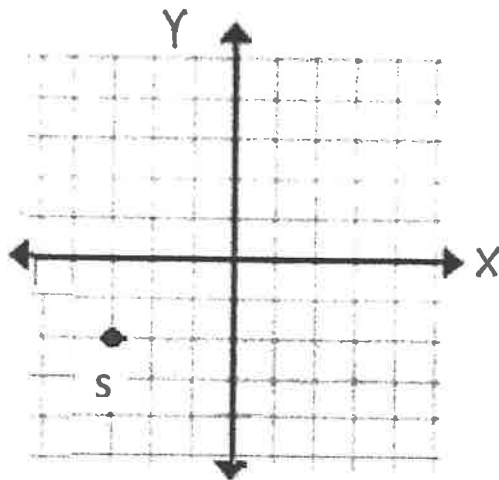
A The number of packages of paper is 50 times the number of sheets of paper.

B The number of sheets of paper is 50 more than the number of packages.

C The number of sheets of paper is the number of packages divided by 50.

☒ D The number of sheets of paper is 50 times the number of packages.

9) MS. Hector graphed a point **S** on the coordinate grid. Ms. Caroll graphed a point **P** 3 units away from point **S**.



Which ordered pair could represent the location of point **P**?

A) $(-3, 2)$

B) $(-1, -2)$

☒ C) $(-3, 1)$

D) $(1, 2)$

(x, y)

First Read x
then Read y

10) Ms. Pathirage grades 105 tests per hour. Which table represent the relationship between number of hours(h) and the number of tests(t).

A)

Hours(h)	Tests(t)
1	105
2	220
3	345

B)

Hours(h)	Tests(t)
2	210
4	420
8	840

C)

Hours(h)	Tests(t)
105	1
210	2
315	3

D)

Hours(h)	Tests(t)
3	330
4	450
5	550

X	Y
hr(h)	Tests(t)
1	105
2	210
3	315
4	420
...	...
8	840

